



Renew | Protect | Maintain

# Social Value Activities 2025





## ST. LUKE'S HOSPICE, SHEFFIELD

In January, our Highways division kickstarted our social value initiatives.

Di Harris and Becky Lloyd from CRL, joined by colleagues from the National Highways Yorkshire & Northeast Social Value Group, spent time volunteering at St. Luke's Hospice Charity Shop in Sheffield.

The team supported shop staff by helping to sort and organise a significant influx of donations, with more than 600 bags received over the course of just a few days.

Their efforts helped ensure items could be processed efficiently and prepared for sale, directly supporting the hospice's vital work.

# JAN

# FEB

## Odd Socks Day to support the Huntington's Disease Association



CRL demonstrated its commitment to supporting people affected by Huntington's Disease by actively raising awareness and funds for the Huntington's Disease Association. Staff across the organisation took part by wearing odd socks, a simple but effective way to start conversations and highlight the impact of the condition on individuals and families.

Through this initiative, CRL successfully raised £505, which will help the Association continue its essential work, including providing care, advice, and support services.



## Woodrush High School Career Fair

CRL reaffirmed its commitment to inspiring the next generation by attending Woodrush High School's Career Fair in Birmingham.

The team of Sophie Thorneywork, Amy Steedman, and Connor McKirgan, engaged with students to highlight the diverse career opportunities at CR and the vital role the business plays in infrastructure maintenance and repair.

The event also included a memorable meeting with Sky, the British Transport Police's newest puppy recruit. CRL thanked Woodrush High School for hosting a valuable event and the students for their enthusiasm and interest in future construction and STEM careers.



# APRIL

## Birmingham Mind Garden & Recreational Area Restoration

Since 1962, Birmingham Mind has been dedicated to supporting individuals with mental health needs, helping them build on their strengths and regain control of their lives.

The Beechcroft Hub in Erdington is a stone's throw from our M6 Gravelly Hill Box Beams project and several members of the CRL Highways team, National Highways and our supply chain volunteered their time and energy to undertake various improvements to the gardens and recreational areas at the hub. This area is used by members of the local community who are experiencing hardship or require additional support.

New turf was laid and paving placed. Planters, bird boxes, tables and benches were built and painted, and a raised area constructed for rest and relaxation





# Strathcarron Hospice

## Maintenance & Restoration

In May, our Falkirk team had the privilege of volunteering at Strathcarron Hospice in Denny. During the visit, they carried out maintenance and restoration work on the pondside decking and the children's play area, helping to refresh and preserve these valued outdoor spaces for patients, visitors, and staff.

At CRL, we believe supporting the communities we serve is just as important as our day-to-day work. The experience was truly rewarding, strengthening team spirit and camaraderie while making a positive difference in a special place.

We were truly touched by the kind feedback from Billy at the hospice: "I just wanted to formally thank you and your team for all your work yesterday. It was greatly appreciated, and I look forward to welcoming you back sometime in the future."

# MAY



## Lennox CCF Golf Day

Team CRL was delighted to join Lennox CCF and Ferrovial for a charity golf day dedicated to supporting children with cancer and their families. The event brought together partners and volunteers who contributed through fundraising activities and awareness initiatives, creating a day driven by purpose and collaboration.

Lennox Children's Cancer Fund plays a vital role in providing emotional, financial, and practical support to families facing extremely difficult circumstances. Through the collective efforts of CRL, its supply chain partners, and volunteers, the event successfully raised over £20,000, demonstrating the powerful impact that industry collaboration can have when united for a meaningful cause.

# JUNE

# JULY



## Careers Advice at HMP Sudbury

CRL along with members of the Midlands collaborative community visited HMP Sudbury to take part in a careers event, promoting opportunities within the highways and wider construction sector to the inmates.

The visit provided valuable insight into inmates' aspirations for employment after release and highlighted the positive impact of careers engagement. The event also demonstrated the importance of rehabilitation initiatives, including the 'Release on Temporary Licence' (ROTL) scheme, which supports inmates in gaining experience, building confidence, and reducing reoffending rates.

# AUG



## Swifts Storms U14 Girls' Team

In August CRL proudly agreed to support the Swifts Storms U14 girls' team, a rising force in grassroots football within the Swifts FC development pathway. Working alongside our supply chain partner, EPMS, we helped fund the team's new pink kits. The kit debuted in two impressive fixtures, where Storms delivered a strong derby win against the Stars under the floodlights, followed by a resilient 2-2 draw away to Carnoustie, despite having no outfield substitutes.

These matches highlighted teamwork, determination, and growth. We commend the players, coaches, families, and community behind their success and look forward to supporting the Storms throughout the coming season.

# SEPT

## Grow Jersey



As part of our commitment to giving back to the local community in Jersey, CRL provided hands-on support to the Grow Jersey, a community-focused charitable initiative based in the island of Jersey that operates as a community horticultural project aimed at addressing social, environmental and nutritional challenges within the local population.

Over two days, our team helped construct 9 raised planting beds using reclaimed scaffolding boards, carefully spaced and aligned for accessibility. We also filled the beds with soil improver, compost, and topsoil, and provided labour, tools, and on-site coordination to assist the Grow volunteers.

# SEPT

CONT.



## Teesville Academy Bridge Building

Our Northern team proudly supported the ICE Bridges to Schools programme at Teesville Academy. This hands-on initiative enables students to build, walk across, and dismantle a 12- to 15-meter cable-stayed bridge model, bringing STEM subjects to life. Pupils gain practical experience, develop teamwork and problem-solving skills, and explore potential careers in civil engineering.

Mentoring the students was inspiring; their curiosity, creativity, and enthusiasm were truly rewarding to witness. Initiatives like this allow us to share our expertise, encourage young people to consider engineering pathways, and make a tangible contribution to the local community. Engaging activities like this underscore our commitment to education, skills development, and social value.

# Rose Garden Crematorium Jersey

# OCT



CRL participated in volunteer works at the Crematorium Rose Garden, a tranquil, horticulturally-designed space where families and visitors can reflect and remember loved ones as part of the crematorium's services. The initiative was organised by Government of Jersey Infrastructure & Environment.

On two separate days, our team helped clear and remove weeds to improve the garden's appearance and ensure it remains a peaceful, respectful space for visitors.



# OCT

CONT.

## Beach Clean with **Grow**



CRL participated in a beach cleaning event in partnership with Grow Jersey. This initiative supported environmental sustainability by reducing coastal pollution, protecting marine life, and raising awareness about the importance of caring for the local natural environment.

It formed part of CRL's ongoing efforts to support community and environmental wellbeing in Jersey.

# OCT

CONT.



## Sustainable Merton

CRL partnered with Sustainable Merton to support the Mitcham Community Orchard & Gardens through a hands-on volunteering day. Led by Group SHEQ Advisor Nigel Roper, and supported by his father, a retired carpenter, the team combined professional expertise with community collaboration.

Together, volunteers built trestles, tabletops, benches, and a sink unit, delivering practical improvements to the site. The activity showcased social value in action, bringing skills, experience, and community spirit together to create a meaningful and lasting local impact.

# NOV

## Building Heroes

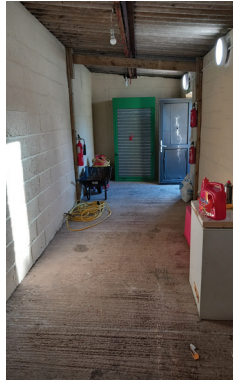


CRL maintained an active partnership with Building Heroes throughout 2025, delivering presentations across multiple locations to engage cohorts transitioning into construction careers.

Senior leaders regularly attended academies, outlined CRL's ethos and opportunities, reviewed practical training, and held one-to-one discussions, and facilitated CV exchanges and follow-ups.

CRL also supported graduations, arranged work shadowing, sponsored the Rising Talent Award, and contributed to industry recognition events, generating positive feedback and tangible recruitment outcomes.

# DEC



Before

After

## Young Bristol

The CRL Southwest team supported the Young Bristol enterprise, helping to strengthen the vital work they deliver for young people across some of the city's most challenging communities.

Our focus was The Grove in Bedminster Down, a much-loved community centre that continues to thrive thanks to the dedication of the Young Bristol team. Together, we refurbished an outdoor

storage building that had fallen into disrepair and improved safety, carrying out essential works and giving the space a fresh new lease of life.

We also helped double the centre's storage capacity by delivering a new 20' storage container, with exciting plans already being explored to potentially transform it into a future tuck shop.

# DEC CONT.



## Our Jay Foundation Defibrillator Donation

CRL supported the OurJay Foundation by donating five defibrillators to Warwickshire Police, helping improve quick access to lifesaving equipment.

The donation followed a presentation at Rugby Police Station and will see the units deployed in neighbourhood policing vehicles across the county.

This support reflects CRL's commitment to safety and to backing initiatives that prevent future tragedies and strengthen frontline emergency response.

# DEC CONT.

## Lennox CCF



Lennox Children's Cancer Fund

**CRL**  
Renew | Protect | Maintain

**25 Days**

This Christmas, we're proud to sponsor a respite break for a family affected by **childhood cancer**, through the **Lennox Children's Cancer Fund 25 Days** campaign.

During the Christmas period, CRL chose to support Lennox Children's Cancer Fund by helping to provide a much-needed respite break for a family affected by childhood cancer. The initiative offered the family valuable time to rest, recharge, and spend meaningful time together during a challenging period.

This support reflected CRL's commitment to giving back and making a positive difference when it matters most. Looking ahead, CRL aims to continue supporting families through Lennox Children's Cancer Fund throughout 2026, reinforcing its dedication to sustained community support beyond the festive season.



16<sup>th</sup>  
Seth

**25 Days**

Lennox Children's Cancer Fund

### Seth was diagnosed with Acute Myeloid Leukaemia

*A few words from Seth's family on why they need a respite break.*

*"For the first time in three years, we will get to see our boys just enjoying being children, and we get to be a family instead of a family living through cancer. Thank you for giving us time, peace, and a moment of normality, away from the machines, the worry, and the endless hospital days. This respite break is a gift we will always hold close.*

*With heartfelt thanks, The Lowdon Family"*

# DEC CONT.

## Warsop Parish Christmas



Keysha, CRL's Employment Development Manager, played a pivotal role in the Warsop Parish Christmas Smile initiative, a volunteer-led project supporting vulnerable families and individuals during the festive season.

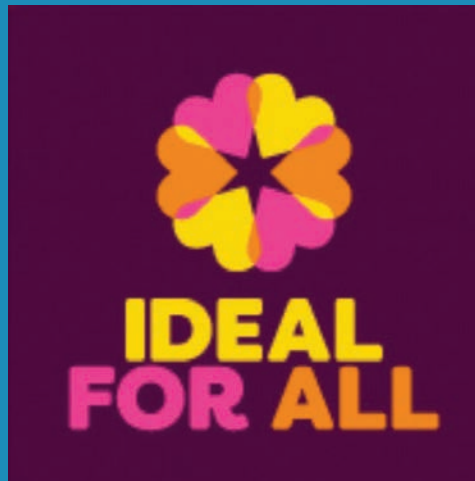
As Treasurer of the organisation, a role she has held for four years, Keysha dedicated significant time and expertise to securing funding, managing nominations, liaising with families, and coordinating bespoke gifts for around 130 children.

She also organised Christmas hampers, supermarket vouchers, and individual gift and treat hampers for elderly residents, ensuring dignified and meaningful support across the community.

This work was made possible through a combination of CRL-supported paid community project leave and her own annual leave, reflecting both personal commitment and organisational values.

# DEC CONT.

## Salop Drive Market Garden



Ideal for All Limited is a user-led registered charity supporting disabled and disadvantaged individuals. During the pandemic lockdowns, one of their garden areas became overgrown and run-down, and the team lacked the resources to restore it to a self-sustaining space.

CRL, working closely with our supply chain partners and the garden's management team, embraced the opportunity to rejuvenate this wellbeing area at a market garden near one of our sites.

Across three visits, we cleared overgrowth, repaired pathways, and enhanced accessibility. The garden is now a welcoming, fully inclusive environment for local residents, schools, and community groups, supporting well-being and their engagement for years to come.



Renew | Protect | Maintain

[crl-uk.com](https://crl-uk.com)